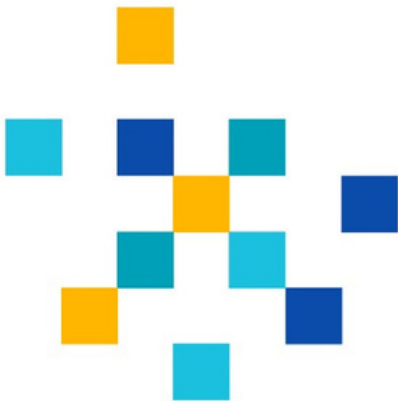




PRIVATE ACADEMY

STRIDE COLLEGE & CAREER PREP HANDBOOK

2023-2024



PREPARED FOR
Faculty, Students &
Learning Coaches





TABLE OF CONTENTS

01

About Stride College & Career Prep

K12 Private Academy is proud to offer our Stride College & Career Prep where students work toward achieving their college and career goals through targeted coursework, earn certifications, and receive individualized coaching and counseling.

02

Project-Based Learning

Select courses contain projects that are designed to mimic real-life professional scenarios, enhancing students' ability to problem solve and collaborate.

03

Virtual Job Shadowing

Professionals from a wide variety of disciplines present to our Stride College & Career student body about a day-in-the-life in their job, and share about what it takes to get there.

04

Middle School Program

Middle school students have the opportunity to take career exploration and technology courses that expand their horizons and sharpen their technical skills in preparation for high school.

05

High School Pathways

K12 Private Academy offers 11 different pathways in Information Technology, Healthcare, Business/Marketing, Visual Arts, and Engineering

06

Certifications

After completing eligible coursework, students are prepared to take industry-recognized certifications that will help them to demonstrate their skills to prospective colleges and employers.

07

Work-Based Learning

Students can earn high school credit toward graduation & pathway completion for working, running a student-led business, or participating in an internship.

08

Stride College & Career Support Team

Stride College & Career students have access to a team of educators who are prepared to help students unlock their college and career goals.

09

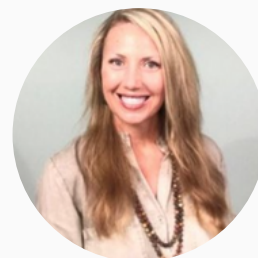
Tallo

Online platform to help students connect with possible colleges, employers, internships, and scholarships.

About Stride College & Career Prep

We are so excited that you are interested in the Stride Career & College Prep @ K12 Private Academy!! My name is Dr. Susan Hollingsworth, and I am the Deputy Head of School and your College & Career Readiness Administrator. We started this area of our school, so students were able to further personalize their education experience to prepare for success in today's high-skilled careers. Stride Career & College Prep utilizes every opportunity to allow students to learn from peer collaboration, work-based learning, career and technical student organizations, project-based learning, industry-recognized certification preparation, internships, job shadowing, practicums, industry chats, resume and portfolio building, and many more educational career learning connections. These experiences combined with course content in six different industry clusters with 11 career pathways allows for a differentiated upper school experience leading to college/university enrollment, career placement and/or military enlistment.

I encourage you to take some time to review the very informative pages of document to learn more about how this program will assist you in achieving your goals. Please do not hesitate to reach out to myself or our Stride College & Career Support Team with any questions. We are excited to discuss this wonderful opportunity with you!



Dr. Susan Hollingsworth

Deputy Executive Director

shollingsworth@strideprivateacademy.org

571.453.7854

Project-Based Learning

Project Based Learning (PBL) is a research-based instructional methodology where students are presented with real-world problems or challenges and seek solutions through authentic learning experiences. Many students find PBL to be rigorous, challenging, and engaging while providing better preparation for their ongoing academic journey and professional careers. In addition to covering academic standards, PBL is designed to integrate Durable Skills to ensure our students are well-equipped for future opportunities.

Virtual Job Shadowing

One of the most unique opportunities we offer at K12 Private Academy is the opportunity to participate in sessions with professionals from a wide range of industries where they share about a day-in-the-life of their job, the education/training required, and the skills and traits needed for success in their job. Past virtual job shadow sessions include:

- Flight nurse in Antarctica
- Marine biologist
- Ethical hacker
- Museum curator
- & SO many more (80+ sessions held during 2022-2023 school year)!

Middle School Program

In addition to a student's core coursework, middle school students are also encouraged to participate in our middle school pathway and to earn certifications along the way. During this exploratory phase in their education, students are highly encouraged to also take advantage of the live virtual job shadows and other career-focused activities.

Course Sequence

- CAR005 Middle School Career Explorations 1
- CAR007 Middle School Career Explorations 2
- TCH006 Introduction to the Internet
- TCH007 World of Computing
- TCH008 Web Design

Mature 8th grade students who have completed ALL of the middle-school technology courses may be considered for placement in high school-level elective courses that align with their intended pathway.

Live Sessions

Beyond the coursework, middle school students are particularly encouraged to participate in the live programming offered by the CRE Coordinator and Stride College & Career School Counselor. Topics include:

- Virtual job shadowing
- Career scavenger hunts
- Professional soft-skills development
- Personal finance & current events
- Career cluster explorations

High School Pathways

A primary goal for students in the Stride College & Career program at K12 Private Academy is to complete a sequence of courses that will help prepare them for future success in a career field of interest. We currently offer 11 pathways in the following disciplines:

- IT: Programming
- IT: Video Game Design
- IT: Web & Digital Communications
- IT: Cybersecurity
- Healthcare: Informatics
- Healthcare: Therapeutics
- Business: General Management
- Business: Entrepreneurship
- Marketing: Marketing Communications
- Visual Arts
- Engineering

Declaring a Pathway

Students are encouraged to declare a pathway upon enrollment. In order to have time to complete a pathway, students **MUST** choose a pathway by the start of 11th grade. Declarations can be made by emailing your Academic Success Coach (ASC), School Counselor, or CRE Coordinator.

Completing a Pathway

Students must earn a minimum of 4 high school credits in their chosen pathway in order to be considered a pathway completer. Within those four credits, there are opportunities for Work-Based Learning and advanced learning opportunities (certain AP & dual enrollment courses). Students should work with their ASC and/or school counselor to select courses that will work toward satisfying completion requirements.

What do I get for completing a pathway?

Students who complete a Stride College & Career pathway distinguish themselves in many ways:

- Recognition at graduation.
- Earn a certificate of completion.
- Earn an additional seal on diploma.
- Include on resume for college and employment.

Pathway Course Plans

The next several pages outline the recommended course sequences for each pathway offered. Students are encouraged to work with ASC/School Counselor to come up with plans that meet their specific interests & goals.

- Many core courses and electives are available as Honors, AP, and/or Dual Enrollment courses. Certain alternatives may be available when discussed with ASC or School Counselor.
- *Courses marked with an asterisk are required for certifications. See pages 17-30 for more details.

- Courses marked in yellow are required for pathway completion.



Programming



Recommended 4-Year Plan

Freshman Year	
Fall	Spring
ENG108 Summit English 9	
MTH108 Summit Algebra 1	
SCI113 Summit Earth Science	
HST103 Summit World History	
World Language 1	
CAR095-PBL IT Explorations	TCH380 Computer Fundamentals*

Sophomore Year	
Fall	Spring
ENG208 Summit English 10	
MTH208 Summit Geometry	
SCI113 Summit Biology	
HST203 Summit Geography	
World Language 2	
TCH323A & B Java Programming*	

Junior Year	
Fall	Spring
ENG308 Summit American Literature	
MTH308 Summit Algebra 2	
SCI303 Summit Chemistry	
HST303 Summit US History	
TCH342A & B Python Programming*	
OTH010 Summit Skills for Health	OTH020A Summit Physical Education

Senior Year	
Fall	Spring
ENG403 Summit British and World Literature	
MTH403 Summit Precalculus/Trigonometry	
SCI403 Summit Physics	
HST403 US Gov't & Politics	HST413 US & Global Economics
TCH520 Data Structure 1 C++*	TCH521 Data Structure 2 C++*
Programming Elective	Programming Elective



Video Game Design



Recommended 4-Year Plan

Freshman Year	
Fall	Spring
ENG108 Summit English 9	
MTH108 Summit Algebra 1	
SCI113 Summit Earth Science	
HST103 Summit World History	
World Language 1	
CAR095-PBL IT Explorations	TCH380 Computer Fundamentals*

Sophomore Year	
Fall	Spring
ENG208 Summit English 10	
MTH208 Summit Geometry	
SCI113 Summit Biology	
HST203 Summit Geography	
World Language 2	
TCH073-PBL A&B Video Game Design 1*	

Junior Year	
Fall	Spring
ENG308 Summit American Literature	
MTH308 Summit Algebra 2	
SCI303 Summit Chemistry	
HST303 Summit US History	
TCH450 Intro to JavaScript*	TCH083A Animation
OTH010 Summit Skills for Health	OTH020A Summit Physical Education

Senior Year	
Fall	Spring
ENG403 Summit British and World Literature	
MTH403 Summit Precalculus/Trigonometry	
SCI403 Summit Physics	
HST403 US Gov't & Politics	HST413 US & Global Economics
TCH083B Animation	TCH303 Digital Media: Illustrator OR TCH310 Digital Media: Photoshop*
TCH342 Python Programming*	



Cybersecurity



Recommended 4-Year Plan

Freshman Year	
Fall	Spring
ENG108 Summit English 9	
MTH108 Summit Algebra 1	
SCI113 Summit Earth Science	
HST103 Summit World History	
World Language 1	
CAR095 IT Explorations	TCH380 Computer Fundamentals*

Sophomore Year	
Fall	Spring
ENG208 Summit English 10	
MTH208 Summit Geometry	
SCI113 Summit Biology	
HST203 Summit Geography	
World Language 2	
TCH561 & TCH 562 A+ Computer Management 1&2*	

Junior Year	
Fall	Spring
ENG308 Summit American Literature	
MTH308 Summit Algebra 2	
SCI303 Summit Chemistry	
HST303 Summit US History	
TCH541 & TCH 542 Network+ Guide to Networks 1 & 2*	
OTH010 Summit Skills for Health	OTH020A Summit Physical Education

Senior Year	
Fall	Spring
ENG403 Summit British and World Literature	
MTH403 Summit Precalculus/Trigonometry	
SCI403 Summit Physics	
HST403 US Gov't & Politics	HST413 US & Global Economics
TCH551 & TCH 552 Security + w/ Exam Prep 1&2*	
IT Elective	IT Elective



Web & Digital Communications

Recommended 4-Year Plan



Freshman Year	
Fall	Spring
ENG108 Summit English 9	
MTH108 Summit Algebra 1	
SCI113 Summit Earth Science	
HST103 Summit World History	
World Language 1	
TCH04-PBL Web Design 1*	

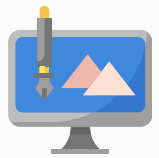
Sophomore Year	
Fall	Spring
ENG208 Summit English 10	
MTH208 Summit Geometry	
SCI113 Summit Biology	
HST203 Summit Geography	
World Language 2	
TCH303 Digital Media: Illustrator*	TCH310 Digital Media: Photoshop*

Junior Year	
Fall	Spring
ENG308 Summit American Literature	
MTH308 Summit Algebra 2	
SCI303 Summit Chemistry	
HST303 Summit US History	
TCH370 Web Development*	
OTH010 Summit Skills for Health	OTH020A Summit Physical Education

Senior Year	
Fall	Spring
ENG403 Summit British and World Literature	
MTH403 Summit Precalculus/Trigonometry	
SCI403 Summit Physics	
HST403 US Gov't & Politics	HST413 US & Global Economics
TCH450 Intro to JavaScript*	IT Elective
IT Elective	IT Elective



Visual Arts



Recommended 4-Year Plan

Freshman Year	
Fall	Spring
ENG108 Summit English 9	
MTH108 Summit Algebra 1	
SCI113 Summit Earth Science	
HST103 Summit World History	
World Language 1	
CAR015-PBL Arts, AV, Communications Explorations	TCH303 Digital Media: Illustrator w/ Cert Prep
Junior Year	
Fall	Spring
ENG308 Summit American Literature	
MTH308 Summit Algebra 2	
SCI303 Summit Chemistry	
HST303 Summit US History	
TCH310 Digital Media: Photoshop*	TCH430 Digital Media: Animate*
OTH010 Summit Skills for Health	OTH020A Summit Physical Education

Sophomore Year	
Fall	Spring
ENG208 Summit English 10	
MTH208 Summit Geometry	
SCI113 Summit Biology	
HST203 Summit Geography	
World Language 2	
TCH028 Digital Arts 1	TCH 029 Digital Arts 2
Senior Year	
Fall	Spring
ENG403 Summit British and World Literature	
MTH403 Summit Precalculus/Trigonometry	
SCI403 Summit Physics	
HST403 US Gov't & Politics	HST413 US & Global Economics
Visual Arts Elective	Visual Arts Elective
Elective	Elective



Engineering & Technology

Recommended 4-Year Plan



Freshman Year	
Fall	Spring
ENG108 Summit English 9	
MTH108 Summit Algebra 1	
SCI113 Summit Earth Science	
HST103 Summit World History	
World Language 1	
CAR031-PBL Engineering Explorations	OTH020A Summit Physical Education
Junior Year	
Fall	Spring
ENG308 Summit American Literature	
MTH308 Summit Algebra 2	
SCI303 Summit Chemistry	
HST303 Summit US History	
TCH160 Introduction to Robotics 1	TCH162 Introduction to Robotics 2
OTH010 Summit Skills for Health	Elective

Sophomore Year	
Fall	Spring
ENG208 Summit English 10	
MTH208 Summit Geometry	
SCI113 Summit Biology	
HST203 Summit Geography	
World Language 2	
MFG240 Applied Engineering 1	MFG 250 Applied Engineering 2
Senior Year	
Fall	Spring
ENG403 Summit British and World Literature	
MTH403 Summit Precalculus/Trigonometry	
SCI403 Summit Physics	
HST403 US Gov't & Politics	HST413 US & Global Economics
OTH212-PBL & OTH213-PBL Engineering Drawing and Design 1&2	
Engineering Elective	Elective



Business: General Management

Recommended 4-Year Plan



Freshman Year	
Fall	Spring
ENG108 Summit English 9	
MTH108 Summit Algebra 1	
SCI113 Summit Earth Science	
HST103 Summit World History	
World Language 1	
CAR017-PBL Business & Marketing Explorations	OTH020A Summit Physical Education
Junior Year	
Fall	Spring
ENG308 Summit American Literature	
MTH308 Summit Algebra 2	
SCI303 Summit Chemistry	
HST303 Summit US History	
BUS320-PBL Introduction to Management	BUS311 Management: Insight and Oversight
OTH010 Summit Skills for Health	Business Elective

Sophomore Year	
Fall	Spring
ENG208 Summit English 10	
MTH208 Summit Geometry	
SCI113 Summit Biology	
HST203 Summit Geography	
World Language 2	
BUS130-PBL Intro to Business Info Mgmt	BUS140-PBL Business Info Mgmt Data Essentials
Senior Year	
Fall	Spring
ENG403 Summit British and World Literature	
MTH403 Summit Precalculus/Trigonometry	
SCI403 Summit Physics	
HST403 US Gov't & Politics	HST413 US & Global Economics
BUS320-PBL Introduction to Business Law	BUS340-PBL Business Law: Legal Aspects of Business
Business Elective	Business Elective



Business: Entrepreneurship

Recommended 4-Year Plan



Freshman Year	
Fall	Spring
ENG108 Summit English 9	
MTH108 Summit Algebra 1	
SCI113 Summit Earth Science	
HST103 Summit World History	
World Language 1	
CAR017-PBL Business & Marketing Explorations	OTH020A Summit Physical Education
Junior Year	
Fall	Spring
ENG308 Summit American Literature	
MTH308 Summit Algebra 2	
SCI303 Summit Chemistry	
HST303 Summit US History	
BUS430 Business Ownership 1*	BUS431 Business Ownership 1*
OTH010 Summit Skills for Health	Business Elective

Sophomore Year	
Fall	Spring
ENG208 Summit English 10	
MTH208 Summit Geometry	
SCI113 Summit Biology	
HST203 Summit Geography	
World Language 2	
BUS045-PBL Entrepreneurship 1*	BUS055-PBL Entrepreneurship 2*
Senior Year	
Fall	Spring
ENG403 Summit British and World Literature	
MTH403 Summit Precalculus/Trigonometry	
SCI403 Summit Physics	
HST403 US Gov't & Politics	HST413 US & Global Economics
BUS130-PBL Intro to Business Info Mgmt	BUS140-PBL Business Info Mgmt Data Essentials
Business Elective	Business Elective



Marketing Communications

Recommended 4-Year Plan



Freshman Year	
Fall	Spring
ENG108 Summit English 9	
MTH108 Summit Algebra 1	
SCI113 Summit Earth Science	
HST103 Summit World History	
World Language 1	
CAR017-PBL Business & Marketing Explorations	OTH020A Summit Physical Education
Junior Year	
Fall	Spring
ENG308 Summit American Literature	
MTH308 Summit Algebra 2	
SCI303 Summit Chemistry	
HST303 Summit US History	
BUS410-PBL & 420 Intro to Business Communications 1&2	
OTH010 Summit Skills for Health	Business Elective

Sophomore Year	
Fall	Spring
ENG208 Summit English 10	
MTH208 Summit Geometry	
SCI113 Summit Biology	
HST203 Summit Geography	
World Language 2	
BUS065-PBL Marketing 1*	BUS075-PBL Marketing 2*
Senior Year	
Fall	Spring
ENG403 Summit British and World Literature	
MTH403 Summit Precalculus/Trigonometry	
SCI403 Summit Physics	
HST403 US Gov't & Politics	HST413 US & Global Economics
BUS090 & BUS091 Sports and Entertainment Marketing 1 & 2	
Business Elective	Business Elective



Health Science: Therapeutics

Recommended 4-Year Plan



Freshman Year	
Fall	Spring
ENG108 Summit English 9	
MTH108 Summit Algebra 1	
SCI203 Summit Biology (pre-requisite for A&P)*	
HST103 Summit World History	
World Language 1	
HLT110-PBL Health Science w/ Newslea*	HLT340 Professionalism in Allied Health*

Sophomore Year	
Fall	Spring
ENG208 Summit English 10	
MTH208 Summit Geometry	
SCI330 Anatomy & Physiology*	
HST203 Summit Geography	
World Language 2	
HLT 213 & HLT 214 Medical Terminology 1 & 2	

Junior Year	
Fall	Spring
ENG308 Summit American Literature	
MTH308 Summit Algebra 2	
SCI303 Summit Chemistry	
HST303 Summit US History	
Clinical Medical Assisting, Pharmacy Technician OR Sports Medicine*	
OTH010 Summit Skills for Health	OTH020A Summit Physical Education

Senior Year	
Fall	Spring
ENG403 Summit British and World Literature	
MTH403 Summit Precalculus/Trigonometry	
SCI403 Summit Physics	
HST403 US Gov't & Politics	HST413 US & Global Economics
Medical Elective	Medical Elective
Elective	Elective



Health Science: Informatics

Recommended 4-Year Plan



Freshman Year	
Fall	Spring
ENG108 Summit English 9	
MTH108 Summit Algebra 1	
SCI203 Summit Biology (pre-requisite for A&P)*	
HST103 Summit World History	
World Language 1	
HLT110-PBL Health Science w/ Newslea*	HLT340 Professionalism in Allied Health*

Sophomore Year	
Fall	Spring
ENG208 Summit English 10	
MTH208 Summit Geometry	
SCI330 Anatomy & Physiology*	
HST203 Summit Geography	
World Language 2	
HLT 213 & HLT 214 Medical Terminology 1 & 2 *	

Junior Year	
Fall	Spring
ENG308 Summit American Literature	
MTH308 Summit Algebra 2	
SCI303 Summit Chemistry	
HST303 Summit US History	
HLT440 Insurance Billing & Coding*	HLT441 Electronic Health Records*
OTH010 Summit Skills for Health	OTH020A Summit Physical Education

Senior Year	
Fall	Spring
ENG403 Summit British and World Literature	
MTH403 Summit Precalculus/Trigonometry	
SCI403 Summit Physics	
HST403 US Gov't & Politics	HST413 US & Global Economics
HLT442 Medical Scribe*	Medical Elective
Elective	Elective



Undecided



Recommended 4-Year Plan

Freshman Year	
Fall	Spring
ENG108 Summit English 9	
MTH108 Summit Algebra 1	
SCI113 Summit Earth Science	
HST103 Summit World History	
World Language 1	
OTH020A Summit Physical Education	TCH110 Software Apps: Word w/ Cert Prep

Sophomore Year	
Fall	Spring
ENG208 Summit English 10	
MTH208 Summit Geometry	
SCI203 Summit Biology	
HST203 Summit Geography	
World Language 2	
OTH010 Summit Skills for Health	TCH220 Software Apps: Excel w Cert Prep

Junior Year (Must Declare Pathway)	
Fall	Spring
ENG308 Summit American Literature	
MTH308 Summit Algebra 2	
SCI303 Summit Chemistry	
HST303 Summit US History	
Pathway Course	Pathway Course
Pathway Course	Pathway Course

Senior Year	
Fall	Spring
ENG403 Summit British and World Literature	
MTH403 Summit Precalculus/Trigonometry	
SCI403 Summit Physics	
HST403 US Gov't & Politics	HST413 US & Global Economics
Pathway Course	Pathway Course
Pathway Course	Pathway Course

Certifications

To be competitive in the job market and for college admissions, industry-recognized certifications can help make applicants stand out! The following certifications are available to be taken through K12 Private Academy. Additional fees and requirements may apply. Contact Mrs. Lisa Day with any questions regarding certification.

All Pathways Career Skills Certifications

Certification	Certifying Body	Course Requirements
MOS Excel	Certiport	TCH220DE1 Software Apps: Excel with Cert Prep (MSi)
MOS Excel Expert	Certiport	TCH320DE1 Software Apps: Excel Expert with Cert Prep (MSi)
MOS PowerPoint	Certiport	TCH100DE1 Software Apps: PowerPoint with Cert Prep (MSi)
MOS Word	Certiport	TCH110DE1 Software Apps: Word with Cert Prep (MSi)
MOS Word Expert	Certiport	TCH210DE1 Software Apps: Word Expert with Cert Prep (MSi)
IC3 Digital Literacy Certification - Computer Fundamentals	Pearson VUE	TCH220DE3-PBL Computer Science Principles (CodeHS) OR TCH380DE1 Computer Fundamentals (CompTIA ITF+) (ITProTV) OR TCH100A Foundations of Computer Science (CodeHS) TCH100B Foundations of Computer Science (CodeHS)
IC3 Digital Literacy Certification - Living Online	Pearson VUE	TCH220DE3-PBL Computer Science Principles (CodeHS) OR TCH380DE1 Computer Fundamentals (CompTIA ITF+) (ITProTV) OR TCH100A Foundations of Computer Science (CodeHS) TCH100B Foundations of Computer Science (CodeHS)

All Pathways Career Skills Certs Continued

Certification	Certifying Body	Course Requirements
IC3 Digital Literacy Certification - Key Applications	Pearson VUE	TCH220DE3-PBL Computer Science Principles (CodeHS) OR TCH380DE1 Computer Fundamentals (CompTIA ITF+) (ITProTV) OR TCH100A Foundations of Computer Science (CodeHS) TCH100B Foundations of Computer Science (CodeHS)
JAVA Programming	Precision Exams	TCH323ADE3 Introduction to Java Programming (CodeHS) TCH323BDE3 Introduction to Java Programming (CodeHS)
Python Programming	Precision Exams	TCH342ADE3 Python Programming (CodeHS) TCH342BDE3 Python Programming (CodeHS)
C++ Programming	Precision Exams	TCH520DE2 Data Structures in C++ 1 (CodeHS) TCH521DE2 Data Structures in C++ 2 (CodeHS)

IT Cluster Certifications

To be competitive in the job market and for college admissions, industry-recognized certifications can help make applicants stand out! The following certifications are available to be taken through K12 Private Academy. Additional fees and requirements may apply. Contact Mrs. Lisa Day with any questions regarding certification.

Certification	Certifying Body	Course Requirements
Programming Pathway		
CompTIA ITF+	CompTIA	TCH220DE3-PBL Computer Science Principles (CodeHS) OR TCH380DE1 Computer Fundamentals (CompTIA ITF+) (ITProTV) OR TCH100A Foundations of Computer Science (CodeHS) TCH100B Foundations of Computer Science (CodeHS)
NOCTI Computer Programmer (Job Ready)	NOCTI	TCH220DE3-PBL Computer Science Principles (CodeHS) OR TCH380DE1 Computer Fundamentals (CompTIA ITF+) (ITProTV) OR TCH100A Foundations of Computer Science (CodeHS) TCH100B Foundations of Computer Science (CodeHS) and minimum of one coding language TCH342ADE3 Python Programming (CodeHS) TCH342BDE3 Python Programming (CodeHS) OR TCH323ADE3 Introduction to Java Programming (CodeHS) TCH323BDE3 Introduction to Java Programming (CodeHS) OR TCH520DE2 Data Structures in C++ 1 (CodeHS) TCH521DE2 Data Structures in C++ 2 (CodeHS) *TCH323ADE3 & TCH323BDE3 Intro to Java pre-req

IT Cluster Certifications Cont.

Certification	Certifying Body	Course Requirements
Video Game Design Pathway		
ICT Gaming Essentials	ICT Essentials (Information and Communications Technology)	TCH220DE3-PBL Computer Science Principles (CodeHS) OR TCH380DE1 Computer Fundamentals (CompTIA ITF+) (ITProTV) OR TCH100A Foundations of Computer Science (CodeHS) TCH100B Foundations of Computer Science (CodeHS) Minimum of one coding language (JAVA, Python, C++) Algebra TCH073ADE3-PBL Video Game Design 1 (CodeHS)
Web & Digital Communications		
Adobe Certified Professional:	ADOBE	TCH400DE1 Digital Media: Dreamweaver with Cert Prep (MSi) TCH310DE1 Digital Media: Photoshop with Cert Prep (MSi) TCH410DE1 Digital Media: Premier Pro with Cert Prep (MSi) TCH410ADE1 Digital Media: Adobe XD with Cert Prep (MSi) TCH410BDE1 Digital Media: Adobe XD with Cert Prep (MSi) TCH303DE1 Digital Media: Illustrator with Cert Prep (MSi)
Visual Design Photoshop	ADOBE	TCH310DE1 Digital Media: Photoshop with Cert Prep (MSi)
Illustrator	ADOBE	TCH303DE1 Digital Media: Illustrator with Cert Prep (MSi)
Adobe XD	ADOBE	TCH410ADE1 Digital Media: Adobe XD with Cert Prep (MSi) and TCH410BDE1 Digital Media: Adobe XD with Cert Prep (MSi)

IT Cluster Certifications Cont.

Certification	Certifying Body	Course Requirements
Adobe Dreamweaver	ADOBE	TCH400DE1 Digital Media: Dreamweaver with Cert Prep (MSi)
NOCTI Interactive Media (Pathway Assessment)	NOCTI	TCH400DE1 Digital Media: Dreamweaver with Cert Prep (MSi) TCH310DE1 Digital Media: Photoshop with Cert Prep (MSi) TCH410DE1 Digital Media: Premier Pro with Cert Prep (MSi) TCH410ADE1 Digital Media: Adobe XD with Cert Prep (MSi) TCH410BDE1 Digital Media: Adobe XD with Cert Prep (MSi) Reccommended TCH370ADE2 Web Development (TCH047AE2 & TCH047BE2 or Web Design experience recommended) (CodeHS) TCH370BDE2 Web Development (CodeHS)
CIW Site Development Associate Web Design	CIW - (Certified Internet Web Professional	TCH370ADE2 Web Development (TCH047AE2 & TCH047BE2 or Web Design experience recommended) (CodeHS) TCH370BDE2 Web Development (CodeHS) TCH450 Intro to JavaScript (Algebra 1 pre-req) OR TCH400DE1 Digital Media: Dreamweaver with Cert Prep (MSi) OR TCH310DE1 Digital Media: Photoshop with Cert Prep (MSi) OR TCH410DE1 Digital Media: Premier Pro with Cert Prep (MSi)
CompTIA Cloud Essentials	CompTIA	TCH370ADE2 Web Development (TCH047AE2 & TCH047BE2 or Web Design experience recommended) (CodeHS) TCH370BDE2 Web Development (CodeHS) TCH553DE3 Cybersecurity (CodeHS) TCH300A Advanced Cybersecurity (CodeHS) TCH300B Advanced Cybersecurity (CodeHS) TCH240DE3 Virtual Reality (CodeHS) TCH310DE3 Mobile Apps (CodeHS)

IT Cluster Certifications Cont.

Certification	Certifying Body	Course Requirements
Network Systems & Cybersecurity		
CompTIA Security+Cyber security	CompTIA	TCH553DE3 Cybersecurity (CodeHS) TCH300A Advanced Cybersecurity (CodeHS) TCH300B Advanced Cybersecurity (CodeHS) TCH500A AP Computer Science: Cybersecurity (CodeHS) TCH500B AP Computer Sciences: Cybersecurity (CodeHS)
NOCTI Computer Networking Fundamentals (Job Ready)	NOCTI	TCH220DE3-PBL Computer Science Principles (CodeHS) OR TCH380DE1 Computer Fundamentals (CompTIA ITF+) (ITProTV) OR TCH100A Foundations of Computer Science (CodeHS) TCH100B Foundations of Computer Science (CodeHS) TCH561E3 A+ Computer Management with Exam Prep 1 (TCH380 recommended pre-req) TCH562E3 A+ Computer Management with Exam Prep 2 TCH541E4 Network+ Guide to Networks 1 TCH542E4 Network+ Guide to Networks 2
AWS Cloud Practitioner	Pearson VUE	TCH370ADE2 Web Development (TCH047AE2 & TCH047BE2 or Web Design experience recommended) (CodeHS) TCH370BDE2 Web Development (CodeHS) TCH553DE3 Cybersecurity (CodeHS) TCH300A Advanced Cybersecurity (CodeHS) TCH300B Advanced Cybersecurity (CodeHS) TCH240DE3 Virtual Reality (CodeHS) TCH310DE3 Mobile Apps (CodeHS)

Marketing Communications Certifications

To be competitive in the job market and for college admissions, industry-recognized certifications can help make applicants stand out! The following certifications are available to be taken through K12 Private Academy. Additional fees and requirements may apply. Contact Mrs. Lisa Day with any questions regarding certification.

Certification	Certifying Body	Course Requirements
ASK Fundamental Marketing Concepts	ASK	BUS065E2-PBL Marketing 1 & BUS075E2-PBL Marketing 2 or BUS024E3 Principles of Business, Marketing, and Finance 1 (eDL) BUS025E3 Principles of Business, Marketing, and Finance 2 (eDL)
Marketing 1	Precision Exams	BUS065E2-PBL Marketing 1
Marketing 2	Precision Exams	BUS075E2-PBL Marketing 2

Visual Arts Certifications

To be competitive in the job market and for college admissions, industry-recognized certifications can help make applicants stand out! The following certifications are available to be taken through K12 Private Academy. Additional fees and requirements may apply. Contact Mrs. Lisa Day with any questions regarding certification.

Certification	Certifying Body	Course Requirements
NOCTI Interactive Media	NOCTI	TCH303DE1 Digital Media: Illustrator with Cert Prep (MSi) TCH310DE1 Digital Media: Photoshop with Cert Prep (MSi)
NOCTI Visual Communications and Interactive Media Design	NOCTI	TCH400DE1 Digital Media: Dreamweaver with Cert Prep (MSi) TCH310DE1 Digital Media: Photoshop with Cert Prep (MSi) TCH410DE1 Digital Media: Premier Pro with Cert Prep (MSi) TCH410ADE1 Digital Media: Adobe XD with Cert Prep (MSi)
Adobe Certified Professional: - Web Development (Dreamweaver)	ADOBE	TCH400DE1 Digital Media: Dreamweaver with Cert Prep (MSi) TCH410BDE1 Digital Media: Adobe XD with Cert Prep (MSi) Recommended TCH370ADE2 Web Development (TCH047AE2 & TCH047BE2 or Web Design experience recommended) (CodeHS) TCH370BDE2 Web Development (CodeHS)
Visual Design (Photoshop) - Software	ADOBE	TCH310DE1 Digital Media: Photoshop with Cert Prep (MSi)
Editing (Premier Pro) - Vector Design Tool	ADOBE	TCH410DE1 Digital Media: Premier Pro with Cert Prep (MSi)
Digital Media	Precision Exams	TCH028 - Digital Arts1 & TCH029 - Digital Arts 2

Business Cluster Certifications

To be competitive in the job market and for college admissions, industry-recognized certifications can help make applicants stand out! The following certifications are available to be taken through K12 Private Academy. Additional fees and requirements may apply. Contact Mrs. Lisa Day with any questions regarding certification.

Certification	Certifying Body	Course Requirements
General Business Pathway		
ASK Fundamental Bus Concepts	ASK	BUS130-PBL Intro to Business Info Mgmt. (eDL) BUS140-PBL Business Info Mgmt: Data Essentials (eDL) BUS310-PBL Introduction to Management 1 (eDL) BUS311 Management: Insight and Oversight (eDL)
ASK Concepts of Entrepreneurship/ Management	ASK	BUS130-PBL Intro to Business Info Mgmt. (eDL) BUS140-PBL Business Info Mgmt: Data Essentials (eDL) BUS045E2-PBL Entrepreneurship 1 BUS055E2-PBL Entrepreneurship 2
NOCTI General Management	NOCTI	BUS310-PBL Introduction to Management 1 (eDL) BUS311 Management: Insight and Oversight (eDL)
MOS Excel	Certiport	TCH220DE1 Software Apps: Excel with Cert Prep (MSi)
MOS Excel Expert	Certiport	TCH320DE1 Software Apps: Excel Expert with Cert Prep (MSi)
MOS PowerPoint	Certiport	TCH100DE1 Software Apps: PowerPoint with Cert Prep (MSi)
MOS Word	Certiport	TCH110DE1 Software Apps: Word with Cert Prep (MSi)

Business Cluster Certifications Cont.

Certification	Certifying Body	Course Requirements
MOS Word Expert	Certiport	TCH210DE1 Software Apps: Word Expert with Cert Prep (MSi)
Entrepreneurship	Precision Exams	BUS045E2-PBL Entrepreneurship 1 BUS055E2-PBL Entrepreneurship 2
Customer Service	Precision Exams	BUS130-PBL Intro to Business Info Mgmt. (eDL) BUS140-PBL Business Info Mgmt: Data Essentials (eDL)
Business Office Specialist	Precision Exams	BUS130-PBL Intro to Business Info Mgmt. (eDL) BUS140-PBL Business Info Mgmt: Data Essentials (eDL)
Entrepreneurship Pathway		
ASK Concepts of Entrepreneurship	ASK	BUS045E2-PBL Entrepreneurship 1 BUS055E2-PBL Entrepreneurship 2 BUS430 Business Ownership 1 (eDL) BUS431 Business Ownership 2 (eDL) BUS310-PBL Introduction to Management 1 (eDL) BUS311 Management: Insight and Oversight (eDL)
ASK Fundamental Business Concepts	ASK	BUS310-PBL Introduction to Management 1 (eDL) BUS311 Management: Insight and Oversight (eDL) BUS130-PBL Intro to Business Info Mgmt. (eDL) BUS140-PBL Business Info Mgmt: Data Essentials (eDL)
MOS Excel	Certiport	TCH220DE1 Software Apps: Excel with Cert Prep (MSi)
MOS Excel Expert	Certiport	TCH320DE1 Software Apps: Excel Expert with Cert Prep (MSi)

Business Certifications Cont.

Certification	Certifying Body	Course Requirements
MOS PowerPoint	Certiport	TCH100DE1 Software Apps: PowerPoint with Cert Prep (MSi)
MOS Word	Certiport	TCH110DE1 Software Apps: Word with Cert Prep (MSi)
MOS Work Expert	Certiport	TCH210DE1 Software Apps: Word Expert with Cert Prep (MSi)
Certiport Entrepreneurship & Small Business Management (partial)	Certiport	BUS130-PBL Intro to Business Info Mgmt. (eDL) BUS140-PBL Business Info Mgmt: Data Essentials (eDL) BUS045E2-PBL Entrepreneurship 1 BUS055E2-PBL Entrepreneurship 2
ESB (Entrepreneurship and Small Business)	ESB	BUS045E2-PBL Entrepreneurship BUS055E2-PBL Entrepreneurship 2 BUS430 Business Ownership 1 (eDL) BUS431 Business Ownership 2 (eDL) BUS310-PBL Introduction to Management 1 (eDL) BUS311 Management: Insight and Oversight (eDL)

Engineering & Technology Certifications

To be competitive in the job market and for college admissions, industry-recognized certifications can help make applicants stand out! The following certifications are available to be taken through K12 Private Academy. Additional fees and requirements may apply. Contact Mrs. Lisa Day with any questions regarding certification.

Certification	Certifying Body	Course Requirements
NOCTI Pre-Engineering/Engineering Technology		MFG240 Applied Engineering 1: Introduction (eDL) MFG250 Applied Engineering 2: Solving Problems (eDL) OTH212E2 Engineering Drawing and Design 1 (Cengage) OTH213E2 Engineering Drawing and Design 2 (Cengage)
Robotics 1	Precision Exams	TCH160 Introduction to Robotics 1 (eDL)
Robotics 2	Precision Exams	TCH162 Introduction to Robotics 2 (eDL)
Engineering Fundamentals	Precision Exams	MFG240 Applied Engineering 1: Introduction (eDL) MFG250 Applied Engineering 2: Solving Problems (eDL)

Health Science Certifications

To be competitive in the job market and for college admissions, industry-recognized certifications can help make applicants stand out! The following certifications are available to be taken through K12 Private Academy. Additional fees and requirements may apply. Contact Mrs. Lisa Day with any questions regarding certification.

Certification	Certifying Body	Course Requirements
CPR/First Aid		Participation in instructor-led certification opportunity.
Health Foundations		HLT110 Health Science
Anatomy & Physiology		HS Biology and SCI330 Anatomy & Physiology
Medical Terminology		HLT213 Medical Terminology 1 & HLT214 Medical Terminology 2
National Health Science Certification		SCI330 Anatomy & Physiology, HLT213 Medical Terminology 1, HLT214 Medical Terminology 2
Certified Clinical Medical Assistant		SCI340 Intro to Anatomy and Medical Terminology OR SCI330 Anatomy and Physiology AND HLT420 Clinical Medical Assisting Must be 18 and possess a high school diploma or equivalent.

Healthcare Certifications Cont.

Certification	Certifying Body	Course Requirements
Clinical Medical Admin Assistant (CMAA)	National Healthcareer Association (NHA)	<p>SCI340 Intro to Anatomy and Medical Terminology OR SCI330 Anatomy and Physiology AND HLT213 Medical Terminology 1 HLT214 Medical Terminology 2 AND HLT 330 Medical Office Procedures & Admin</p> <p>Students will earn provisional certification and must earn high school diploma or GED within 12 months.</p>
Medical Coder and Biller Certification (MCBC)	American Medical Certification Association (AMCA)	<p>SCI340 Intro to Anatomy and Medical Terminology OR SCI330 Anatomy and Physiology AND HLT213 Medical Terminology 1 HLT214 Medical Terminology 2 AND HLT440 Insurance Billing and Coding</p>
Clinical Medical Admin Assistant (CMAA)	National Healthcareer Association (NHA)	<p>SCI340 Intro to Anatomy and Medical Terminology OR SCI330 Anatomy and Physiology AND HLT213 Medical Terminology 1 HLT214 Medical Terminology 2 AND HLT 330 Medical Office Procedures & Admin</p> <p>Students will earn provisional certification and must earn high school diploma or GED within 12 months.</p>

Work-Based Learning

Work-Based Learning WBL531

0.5 credits per section, earn a total of 1.0 credits over two semesters.

Students who have paid employment, unpaid internship or volunteer, or apprenticeship may qualify for this elective work-based learning course. Throughout the course, you will learn from your work experience to develop skills and gain experience, and different aspects of the workplace. This course has four major components.

- Required meeting with the instructor.
- Required 60 hours of work experience.
- Self-reflection, and evaluation of essential workplace skills (Throughout the semester, you will be asked to reflect on your experiences and evaluate your progress. This self-reflection will help you identify areas where you need to improve and strengths you can build on in the future).
- Required Student Learning Agreement

Student-Led Business WBL541

0.5 credits per section, earn a total of 1.0 credits over two semesters.

This course is designed for high school students with an entrepreneurial mindset and who have or are interested in starting their business ventures. Throughout the course, students will learn about the different business aspects, including marketing, sales, finance, legal, and operations.

In addition to developing and running their businesses, students must complete various assignments and projects to reinforce their learning. These may include developing a comprehensive business plan, conducting market research, creating a promotional campaign, and analyzing financial statements. By the end of the course, students will have gained valuable skills and knowledge that will help them succeed in future business ventures. They will also have a portfolio of work to showcase to potential investors or employers. There are four main components to this course:

- Required meeting with the instructor.
- Required documentation of hours worked on your student-led business.
- Submit a comprehensive business plan, including marketing, sales, finance, legal, and operations.
- Submit a student-created professional development plan and portfolio.

Internship WBL511

No Credit

Designed for high school students who are interested in gaining real-world work experience and exploring potential career paths who will complete LESS than 60 working hours during the semester. Through an internship with a local organization or business, students will have the opportunity to apply classroom learning to a professional setting and gain practical skills and knowledge. Students will be responsible for securing their own internship placement, with guidance and support from the instructor. The internship must be with a reputable organization or business and must align with the student's career interests and goals. Students will be required to meet with the instructor regularly to discuss their progress and reflect on their experiences. The length of the student internship experience may vary, but all students must complete a **minimum of five hours** of internship.

Stride College & Career Support Team

CRE Coordinator - Lisa Day

Mrs. Day facilitates career learning opportunities for Stride College & Career students by coordinating virtual job shadows, assisting with internship placement, organizing certification opportunities, and teaching work-based learning courses.

lfowlerday@strideprivateacademy.org
(571) 453-7784



Stride College & Career School Counselor - Rachael McCann

Mrs. McCann supports students by hosting group and individual sessions focused on empowering the student to make informed college and career decisions. She hosts live sessions 3x/ week on topics like choosing a major, how to do online career research, and personal finance. Students are expected to check-in with Mrs. McCann at least 1x / semester.

rmccann@strideprivateacademy.org
(571) 335-0473



Tallo

Tallo is an online tool for students ages 13+ to connect with potential scholarships, employers, internships, and colleges. Students are encouraged to build a profile that highlights their accomplishments and interests and to participate in the live career-focused events that Tallo offers.



For Talent

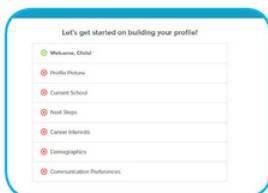
Let's Get Started

Join Tallo, build your profile, connect with opportunities, rule the world.



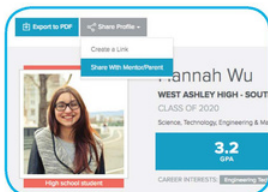
1 Join Tallo

- Go to **tallo.com**
- Sign up with your email or Google
- Click **Create Your Account**



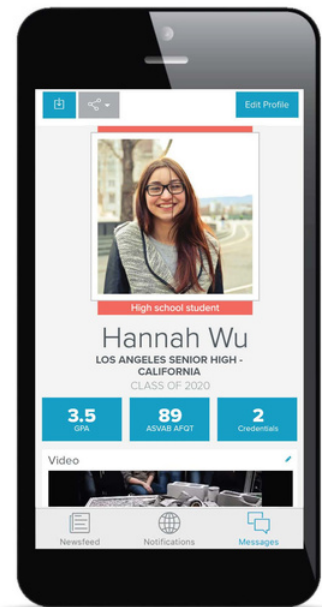
2 Go through Welcome Flow

- Follow the **steps on your screen** to add a profile picture, your current school, next steps, and career interests
- Make sure to verify your email



3 Build Your Profile and Share!

- Click **Profile** and select **Edit Profile** to add experiences, scores, and more
- Have a project or video to showcase? Add it in the **Files & Videos** sections
- Select **Export to PDF** or **Share Profile** to print or share a digital link



What other students say:



"Tallo helped me to realize my capability as an aspiring engineer. With less than 1% of African American women being engineers, I'm changing statistics by being on a 2 year internship and I'm only 17!"
— **Kiyannah B.**



"Knowing how to present yourself to colleges isn't easy. Tallo outlines helped me understand how to market myself"
— **Aaron G.**

Questions? Visit tallo.com or contact us at support@tallo.com | 855 765 7836